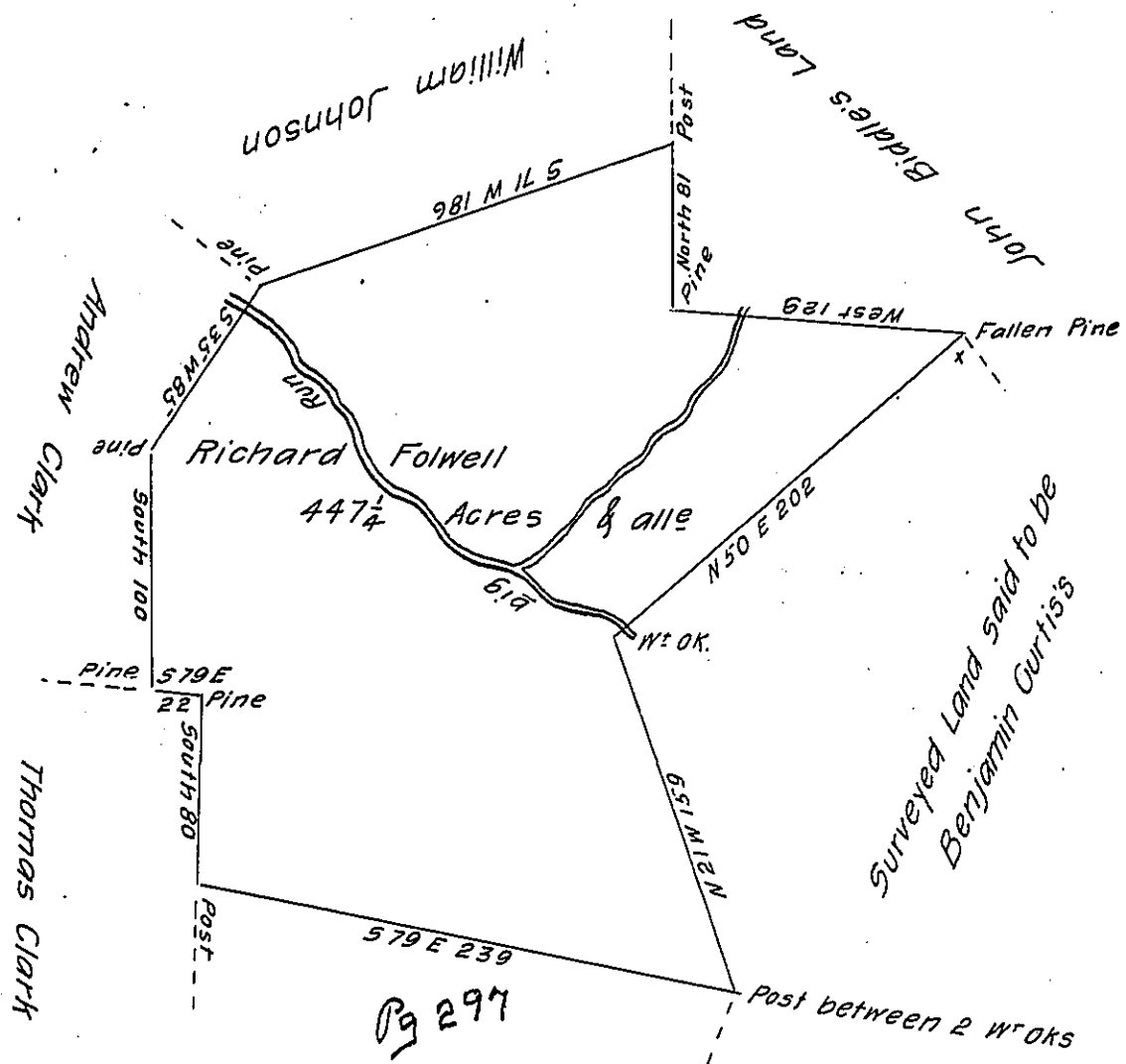


L-43



Situated on the Waters of big Brush Creek in Providence Township
County of Bedford. Containing four hundred and forty seven Acres & 1/4 with the usual
 allowance of six Pr Cent for roads &c. Surveyed for Richard Folwell the 12th day of
November 1794. in pursuance of a Warrant dated the 15th day of April 1794.

George Woods Jun^r D. S.

To Daniel Brodhead Esq^r S. G.

IN TESTIMONY that the above is a copy of the original remaining on file in
 the Department of Internal Affairs of Pennsylvania, made
 conformably to an Act of Assembly approved the 16th day of
 February, 1833, I have hereunto set my Hand and caused
 the Seal of said Department to be affixed at Harrisburg,
 this seventh day of March 1905.

George R. Brown
 Secretary of Internal Affairs.